



## **CLEVERTOUCH**

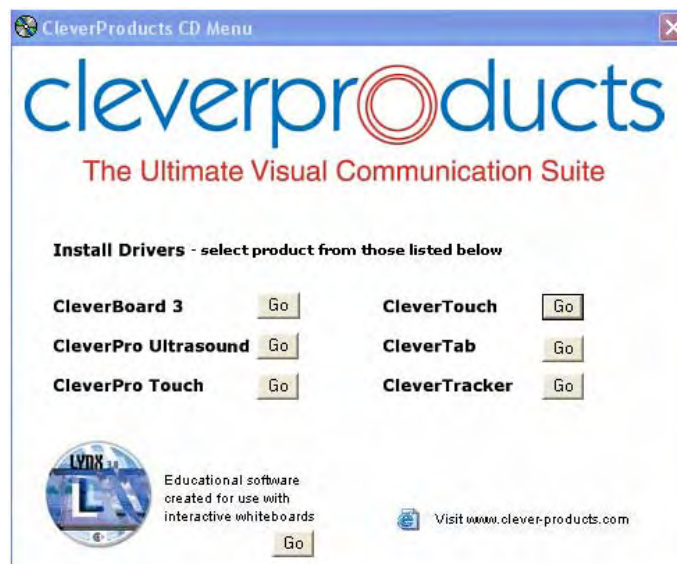
### **Getting Started:**

**Minimum equipment required to enable the system to work:**

- **Clevertouch Board**
- **Cleverproducts CD**
- **Dummy Pen with soft fiber nib**
- **USB Cable, terminating in controller box and connector to Clevertouch Board**
- **Computer (Laptop or desktop)**
- **Projector**
- **VGA Cable**

**Loading Clevertouch Drivers and Lynx Software:**

- **Place the Cleverproducts CD in the CD tray in your computer.**
- **A box will appear as per below:**





- **Select Clevertouch driver and click on “Go”. The driver installation will now take place.**
- **Follow your on screen instructions and finish the driver installation.**
- **Now install the Lynx software (from the same disk) and when prompted to do so add the “Lynx Serial Number” and the “Wordwall License Key” numbers which you will find on the back of the CD case.**
- **Once driver and Lynx software has been successfully loaded re-start your computer to ensure that all changes have taken place.**

### **Essential Connections:**

- **Ensure Clevertouch is mounted on the wall or on a floor stand.**
- **Connect computer to Clevertouch with the USB cable provided.**
- **Connect computer to projector with VGA cable.**
- **Ensure all connections are made and then turn on computer and projector.**
- **Adjust projected image size to fit your board and focus the image.**

### **Beginning an Interactive session:**

**Ensure that all connections have been made as per the section above and that the computer and projector are turned on.**

### **Calibration**

- **At the computer, click on  
“Start”  
“All Programs”  
“UPDD” (Universal Pointer Device Driver)  
“Calibrate”**



- The projected image on the Clevertouch will change to a white background with a black cross that has a red “Dot” in the middle of it, take the dummy pen or tip of your finger and press perpendicularly to the screen as accurately as you can on the red dot, chase the crosses around the board, on the 5<sup>th</sup> cross the screen will close back to desktop.
- The board is now calibrated and when the pen or finger is touched to the screen in each corner the curser should follow and lie directly beneath the pen nib or finger tip. If it does not, repeat the process above.
- You are now ready to use the board interactively with Lynx Software.

#### **Tip: Creating a shortcut to calibration on desktop**

- At the computer, click on  
“Start”  
“All Programs”  
“UPDD” (Universal Pointer Device Driver)  
Highlight “Calibrate”  
Right mouse click  
“Send to”  
“Desktop (create shortcut)”
- When you have done this a new icon will appear on the desktop that will look like the picture below, which can be double clicked at the computer with the mouse every time the board needs to be calibrated and will save you some time.



#### **Troubleshooting:**

1. There is no communication between the computer and the board :
  - Ensure computer is connected to board via USB cable.